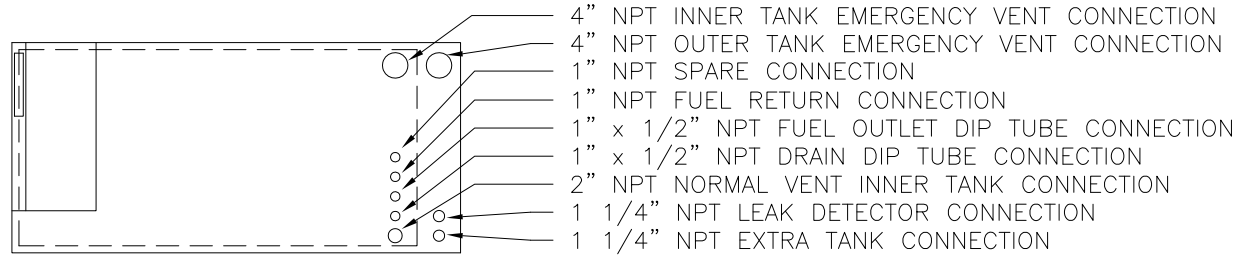
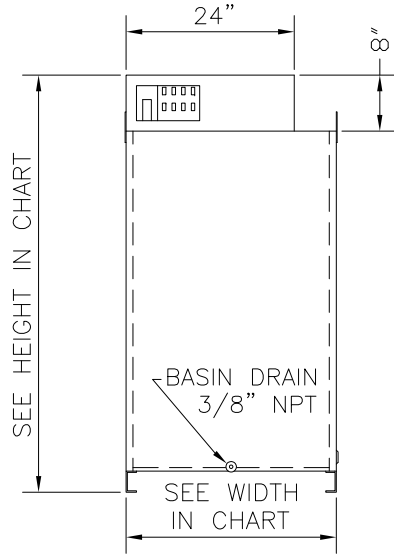


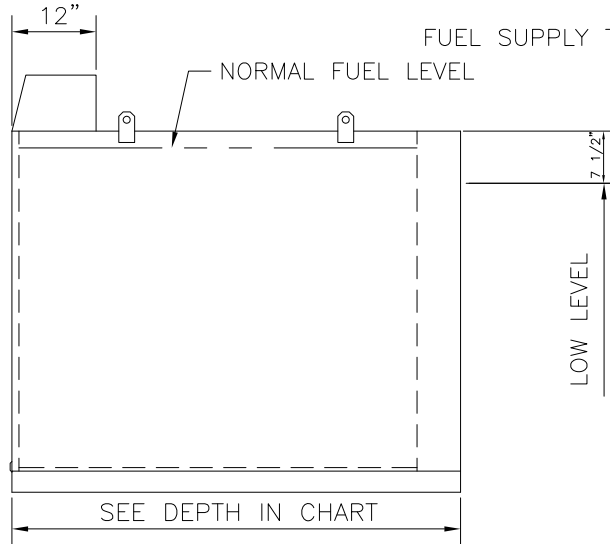
TOP VIEW



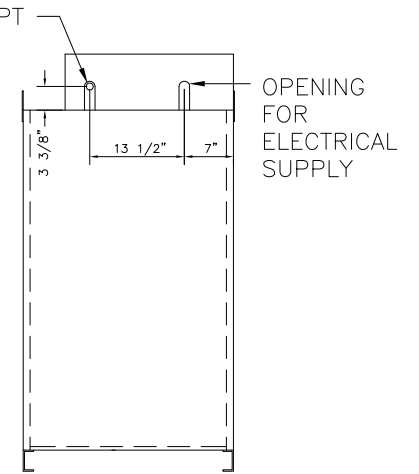
FRONT VIEW



RIGHT SIDE VIEW



REAR VIEW



| | | MODEL | | | |
|--|--|---------|---------|---------|---------|
| | | SCDT275 | SCDT300 | SCDT325 | SCDT350 |

| CAPACITY | GAL. | 275 | 300 | 325 | 350 |
|----------------|------|-------|-------|-------|-------|
| | LIT. | 1041 | 1136 | 1230 | 1325 |
| WIDTH | IN | 30 | 30 | 30 | 30 |
| | CM | 76.2 | 76.2 | 76.2 | 76.2 |
| DEPTH | IN | 60 | 64 | 69 | 74 |
| | CM | 152.4 | 162.6 | 175.3 | 188 |
| HEIGHT | IN | 59.5 | 59.5 | 59.5 | 59.5 |
| | CM | 151.1 | 151.1 | 151.1 | 151.1 |
| WEIGHT | LB | 830 | 871 | 922 | 973 |
| | KG | 376 | 395 | 418 | 441 |
| NORMAL VENT | IN | 2" | 2" | 2" | 2" |
| EMERGENCY VENT | IN | 4" | 4" | 4" | 4" |



E & C A

| REV | DATE | DESCRIPTION | BY |
|-----|-------|------------------------------|-----|
| 4 | 11-13 | NORMAL VENT CHANGED TO 2" | MEP |
| 3 | 5-09 | DELETED OVERFLOW DESCRIPTION | JAS |
| 2 | 7-02 | REMOVED OUTER TANK VENT | TMP |
| 1 | 5-00 | CHANGED MODEL NAMES | TMP |

| SCALE | APPROVED BY | DRAWN BY |
|---------------------------------|-------------|----------|
| NONE | | TMP |
| DATE | 9-4-97 | REVISED |
| SECONDARY CONTAINMENT DT275ULD, | | |
| 300ULD, 325ULD, 350ULD | | |
| DRAWING NUMBER | | 03557 |