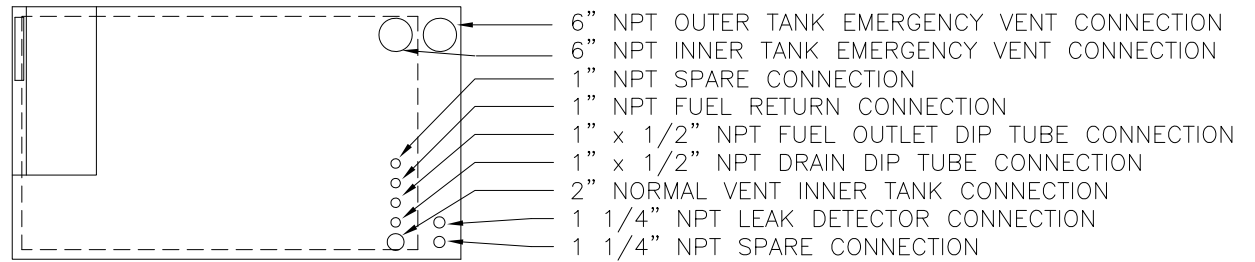
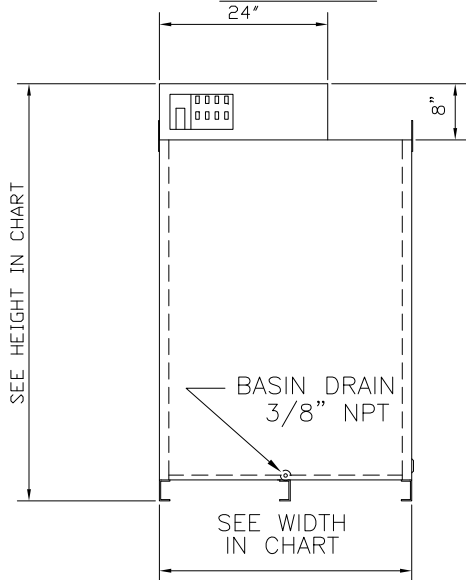


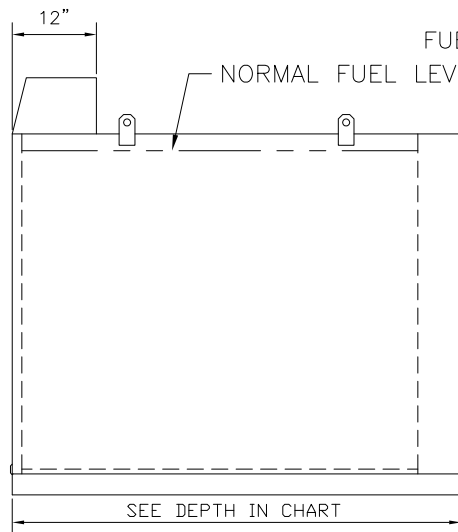
TOP VIEW



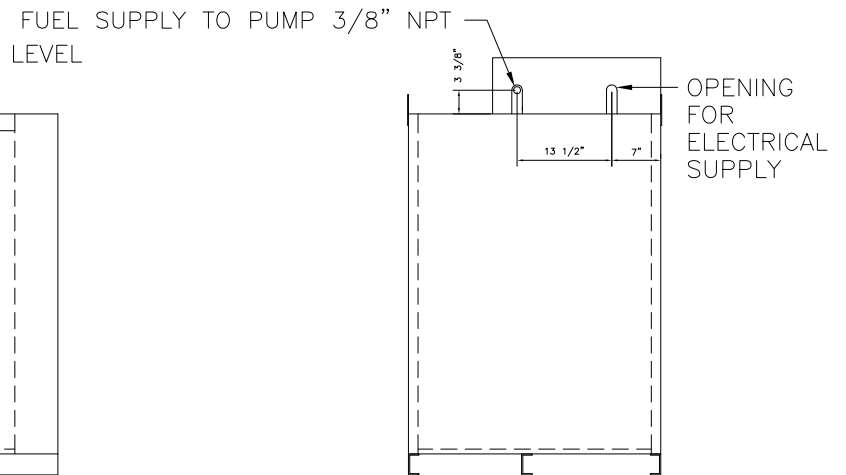
FRONT VIEW



RIGHT SIDE VIEW



REAR VIEW



		MODEL						
		SCDT700	SCDT800	SCDT900	SCDT1000	SCDT2000	SCDT3000	SCDT4000
CAPACITY	GAL.	700	800	900	1000	2000	3000	4000
	LIT.	2660	3040	3420	3800	7600	11400	15200
WIDTH	IN	60	60	60	60	96	96	96
	CM	152.4	152.4	152.4	152.4	243.8	243.8	243.8
DEPTH	IN	74	84	92	108	99	144	190
	CM	188	213.4	233.7	274.3	251.5	365.8	482.6
HEIGHT	IN	59.5	59.5	59.5	59.5	71.5	71.5	71.5
	CM	151.1	151.1	151.1	151.1	181.6	181.6	181.6
WEIGHT	LB	1689	1854	1986	2249	3225	4264	5289
	KG	766	841	901	1020	1463	1934	2399
NORMAL VENT	IN	2"	2"	2"	2"	2"	2"	2"
EMERGENCY VENT	IN	6	6	6	6	6	6	8



FILE MH 15297
WHEN SPECIFIED

E & C A

REV	DATE	DESCRIPTION	BY
4	11-13	NORMAL VENT CHANGED TO 2"	MEP
3	5-09	DELETED OVERFLOW NOTE	JAS
2	3-03	REMOVED OUTER TANK NORMAL VENT	TMP
1	5-00	CHANGED MODEL NAMES	TMP

SCALE NONE	APPROVED BY	DRAWN BY TMP
DATE 10-7-96		REVISED
SECONDARY CONTAINMENT DT700ULD		
800ULD, 900ULD, 1000ULD 2000ULD, 3000ULD, 4000ULD		DRAWING NUMBER 03413